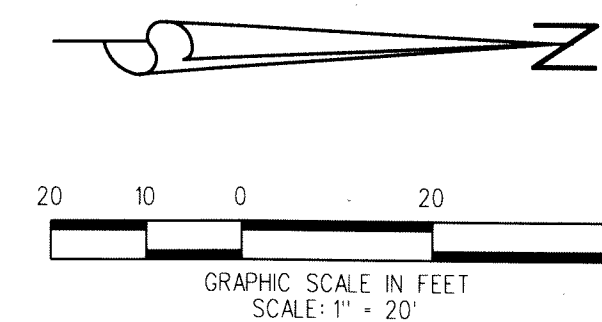


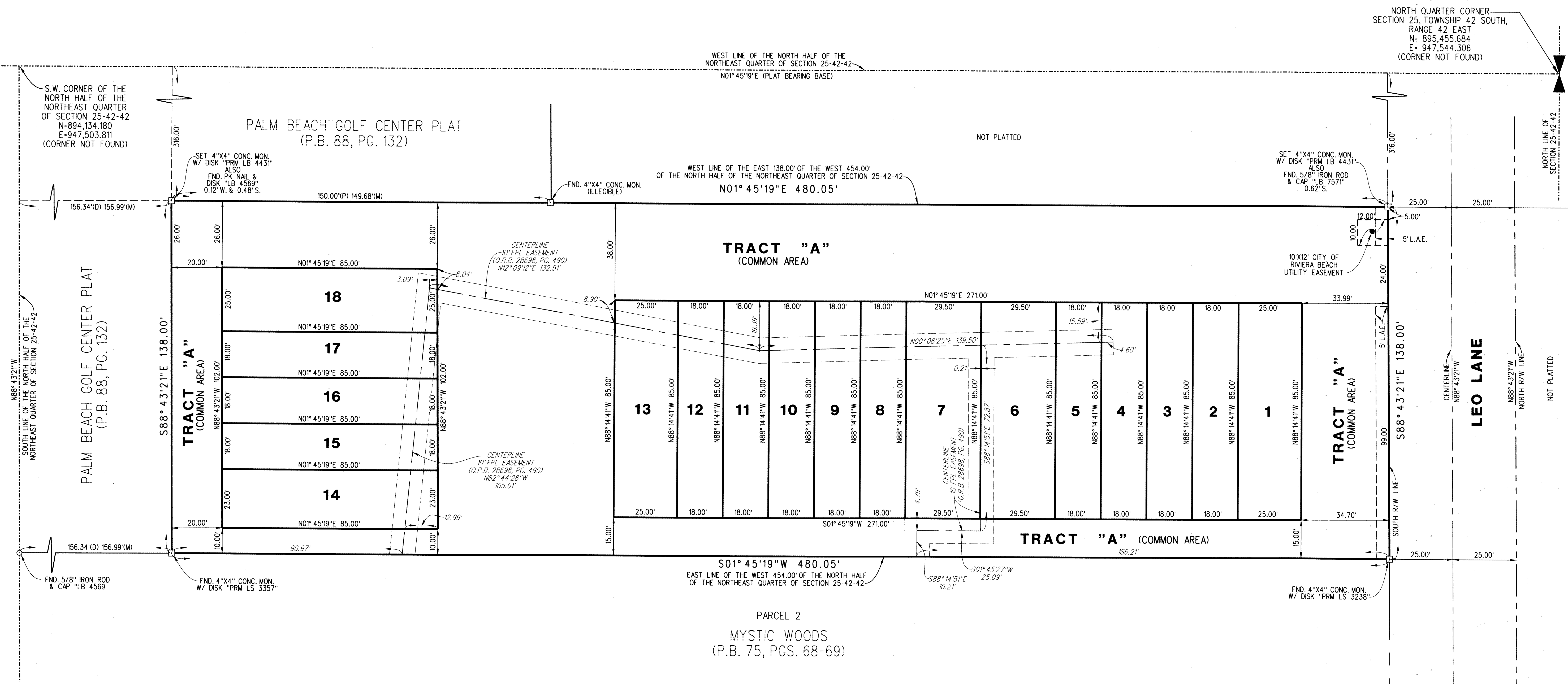
MAGNOLIA PLACE

BEING A PARCEL OF LAND LYING IN THE NORTH HALF OF THE NORTHEAST QUARTER OF SECTION 25, TOWNSHIP 42 SOUTH, RANGE 42 EAST CITY OF RIVIERA BEACH, PALM BEACH COUNTY, FLORIDA

JUNE 2017 SHEET 2 OF 2



B
6/20/17



ABBREVIATIONS:

- (M) = MEASURED
- (P) = AS SHOWN ON SUBJECT PLAT
- CONC. = CONCRETE
- FND. = FOUND
- FPL = FLORIDA POWER & LIGHT CO.
- L.A.E. = LIMITED ACCESS EASEMENT
- MON. = MONUMENT
- O.R.B. = OFFICIAL RECORD BOOK
- P.B. = PLAT BOOK
- P.R.M. = PERMANENT REFERENCE MONUMENT
- P.S.M. = PROFESSIONAL SURVEYOR AND MAPPER
- PG. = PAGE
- R/W = RIGHT OF WAY

LIDBERG LAND SURVEYING, INC.

675 West Indiantown Road, Suite 200,
Jupiter, Florida 33458 TEL: 561-746-8454

CAD. K:\JUST \ 254242 \ 16-118 \ 16-118-306 \ 16-118-306.DGN			
REF.			
F.L.D.	FB.	PG.	JOB 16-118-306
OFF. CASASUS			DATE JUNE 2017
CKD. D.C.L.	SHEET 2	OF 2	DWG. 016-118P